

Autism

We are working with Hertfordshire County Council to put into place recommendations made by Dr Glynis Jones in her 2014 Autism Review. The recommendations range from information that the County Council and the local area should make available to families of children and young people pre and post diagnosis, to how schools should best support pupils with autism and their families.

What is happening in North Herts?

Autism and Girls is one of our key priorities.

Autism & Girls – Described as ‘intense’, shy, quiet or mute (or sometimes talks too much!), Well behaved at school but internalising until getting home where they may explode. Exceptional ‘blenders’ able to hide their difficulties, perfectionist to the point of obsession or avoidance of tasks – these are just a few traits.



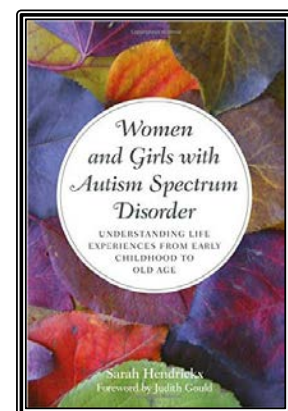
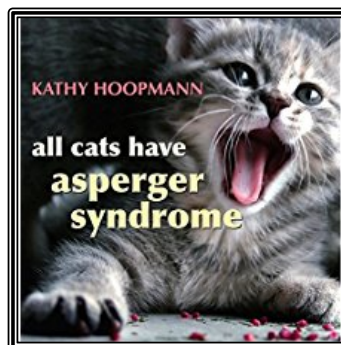
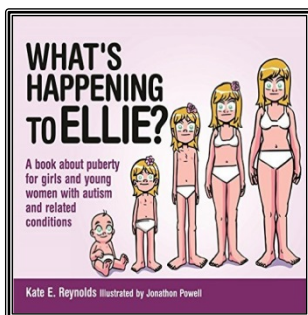
Sarah Hendrickx – Girls & Autism 20 March 2017

Sarah gave a talk at the Spriella Ballroom, Letchworth last month. Talking openly and honestly and Girls and Autism. The feedback from those who attended was overwhelmingly positive.

Feedback

“Very good talk, would highly recommend to others. Lots of details given in an easy to understand way. Thank You.” “Excellent speaker” “Brilliant” “Fantastic and informative evening” “An enjoyable and interesting evening. I have learned so much and will use this information and share with colleagues”

For more information please visit NHDSPL website where links to articles and further reading can be found. www.nhdspl.org.uk/autism.html



Some recommended books following the talk by Sarah Hendrickx.

Autism

Parent Surgeries – Communication and Autism Team If you would like to discuss an issue or query about a child or young person with autism or social communication difficulties with a Specialist Advisory Teacher, please book your 30 minute appointment with Allison Johnson via e mail: allison.johnson@hertfordshire.gov.uk.

Day: Thursday 8th June 2017 **Time:** 9:00 am to 12.00pm
Venue: Baldock Community Centre, 1 Simpson Drive, Baldock SG7 6DH

Day: Tuesday 20th June 2017 **Time:** 12.30pm to 3.00pm
Venue: Letchworth Partnership Pod, Northfields Infant and Nursery School, Burley, Letchworth SG6 4PT

When booking please provide details as indicated below;

- Parent name
- Child name
- Name of school and year group
- Brief outline of what is to be discussed

Advice Line (Parents & Professionals) – Communication and Autism

Team If you would like to discuss an issue or query about a child or young person with autism, speech, language or communication needs, please call **01707 320 697**. The Advice Line will run on **Tuesdays** and **Wednesdays** between **1:30pm and 4pm** during **school term-time**.

Parent Networks

We held our second Parent Network session on 18 March 2017 in Royston. Thanks to Tannery Drift School for hosting. Fintan O'Regan is one of the leading behaviour and learning specialists in the UK. He presented on "Mood Management" and gave parents time to ask questions and to talk about their own situations. Raine Simcox from Angels Support Group talked about the support Angels's offers parents and families. The session was well attended and parents found it very useful. Our next DSPL Parent Network will be in the Summer Term. Details will be available on our website.

Transition – Primary to Secondary

SENCO Transition Days An opportunity for Primary and Secondary School SENCOs to discuss pupils with SEND needs transitioning to Hitchin Boys School, Hitchin Girls School, The Priory School and Hitchin in September 2017. Dates: 24 May and 8 June, book your time slot with Karen Ireland.

Professional Feedback: Attachment including and Oppositional Defiance Disorder

"In response to course will work with colleagues to improve in-school support and understanding."

"Information on strategies, boundaries and sensory therapy with practical solutions"

Parent Feedback: Sensory Needs

"Training meets my son's needs perfectly. I have learnt a lot on ways to help him get more independent."

"A great and very informative course which provided a much better understanding and strategies to put in place to help my child and us as a family"

North Herts Emotional Support in Schools Service (NESSie)

Funded by North Herts DSPL

Supporting positive Mental Health in schools Recognition, Effective Management and Early Intervention

Staff Forums are taking place across the area. Staffs have asked for support with management and building resilience for anxiety, bereavement and understanding attachment behaviours. Previous topics have included themes around Emotional Literacy, effectiveness of local training, sharing information and resources on Anxiety and Resilience and discussing the effectiveness of Protective Behaviours.

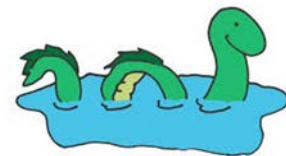
Training Understanding Self-Harm training has been presented to Family Support Workers, SENCOs and to individual schools. We also have a foundation level School's Positive Emotional and Mental Health training (1.5hs) which you can access through your area co-ordinators. We have been liaising with our CAMHS Schools Link Managers for training.

Learning Collaboration with the Anna Freud Centre We were successful in a bid for funding to explore CYP-IAPT (Children and Young People – Increasing Access to Psychological Therapies) in a school setting and have become members of the London and South East Learning Collaborative. We have recruited a team of qualified counsellors and Art Therapists and placed them throughout most of the secondary schools in our area.

Parent Forums Launched in April, Parent Forums will be delivered throughout the year on topics guided by parents.

What does NESSie do?

- We offer support to schools in developing a strategic plan for Emotional and Mental Health.
- We offer training for schools.
- We offer on-going support and supervision to staff.
- We link with key outside agencies.
- We communicate schools' needs to leading commissioners.
- We audit and evaluate services.
- We have a list of quality assured counsellors and Arts therapists for schools at competitive rates.



Website: <http://www.nhdspl.org.uk/nessie.html>

NESSie Staff Forums

Letchworth – Bereavement: Divorce, Separation and Loss

14 June 9:30am to 11:30am – contacts Sarah Blackford (s.blackford@rsat.org.uk) for details.

Royston – How to engage with and develop support networks for parents

24 May 10am to 12pm – contact Sarah Blackford (s.blackford@rsat.org.uk) for details.

Hitchin – Transitions

23 May 1:30pm to 3pm – contact Becky Wilburn (b.wilburn@rsat.org.uk)

North Herts DSPL Contacts & Enquiries

Diane Frainer – Lead school Headteacher	head@yorkroad.herts.sch.uk
Karen Ireland – Delivery Manager	nhdspmanager@wilshere.herts.sch.uk
Charlotte Field – Autism Lead	nhdspl-autism@wilshere.herts.sch.uk
Debbie Robins – Administrator	nhdspl@wilshere.herts.sch.uk
Website: http://www.nhdspl.org.uk/	07527 828 477

Help, Support and Advice

<p>Hertfordshire SEND Information, Advice & Support Service (SENDIASS) Formerly known as Parent Partnership Service, SENDIASS is an impartial information, advice and support service funded by Hertfordshire County Council for parents, carers, young people (0-25) and professionals. Phone 01992 555847 or email sendiass@hertfordshire.gov.uk. Find out more at http://www.hertsdirect.org/services/healthsoc/childfam/specialneeds/educ/parpart/</p>	<p>The KIDS East and West HUBs 01923 676549 The KIDS HUB offers information and support for parents and carers of disabled children / children with additional needs. aged 0-19 in Hertfordshire. KIDS Hub directory of SEND services has also now been published. www.kids.org.uk/hub HARC (Hertfordshire Branch)</p>
<p>Angels Support Group Angels Support Group was formed in response to families in the community in desperate need of support for themselves and their children. All of our volunteers have children with either ADHD or an autistic spectrum disorder and are committed to providing a resource that people will find both useful and accessible, making it available to as many families as possible info@angelsupportgroup.org.uk 01462 685150</p>	<p>Up On Downs Monthly Family and Friends meetings are held in Hitchin. There are also training events across the County. If you have any questions or suggestions please contact Sande or Jan at: enquiries.nhdowns@yahoo.co.uk or call 01462 630 459. www.upondowns.co.uk</p>
<p>Hertfordshire Additional Needs Database You are entitled to join HAND if you are the parent or carer of a child or young person with an additional need or disability aged 0-19. Benefits of joining include a leisure concession card, and subscription to the HAND newsletter. directory.hertsdirect.org/kb5/hertfordshire/directory/service.page?id=W-oM7uWKTro&familychannel=4</p>	<p>For a list of local support groups and voluntary organisations click here http://www.hertsdirect.org/docs/pdf/v/volorgs.pdf The Public Directory of Services is available on the NHDSP website http://nhdspl.org.uk . It contains support information for families in North Herts</p>
<p>Parents and Carers – How can you get involved? Hertfordshire Parent Carer Involvement (HPCI) is the parent carer forum for Hertfordshire and part of a national network of parent carer forums. It is an independent parent carer led organisation with a network of parent carers from all over Hertfordshire. It aims to improve services for families by working alongside those providing services for children and young people with SEND (Special educational needs and disabilities) So if you are a parent or carer of a child or young person with SEND aged 0 – 25 years then join them- http://www.hertsparentcarers.org.uk/</p>	